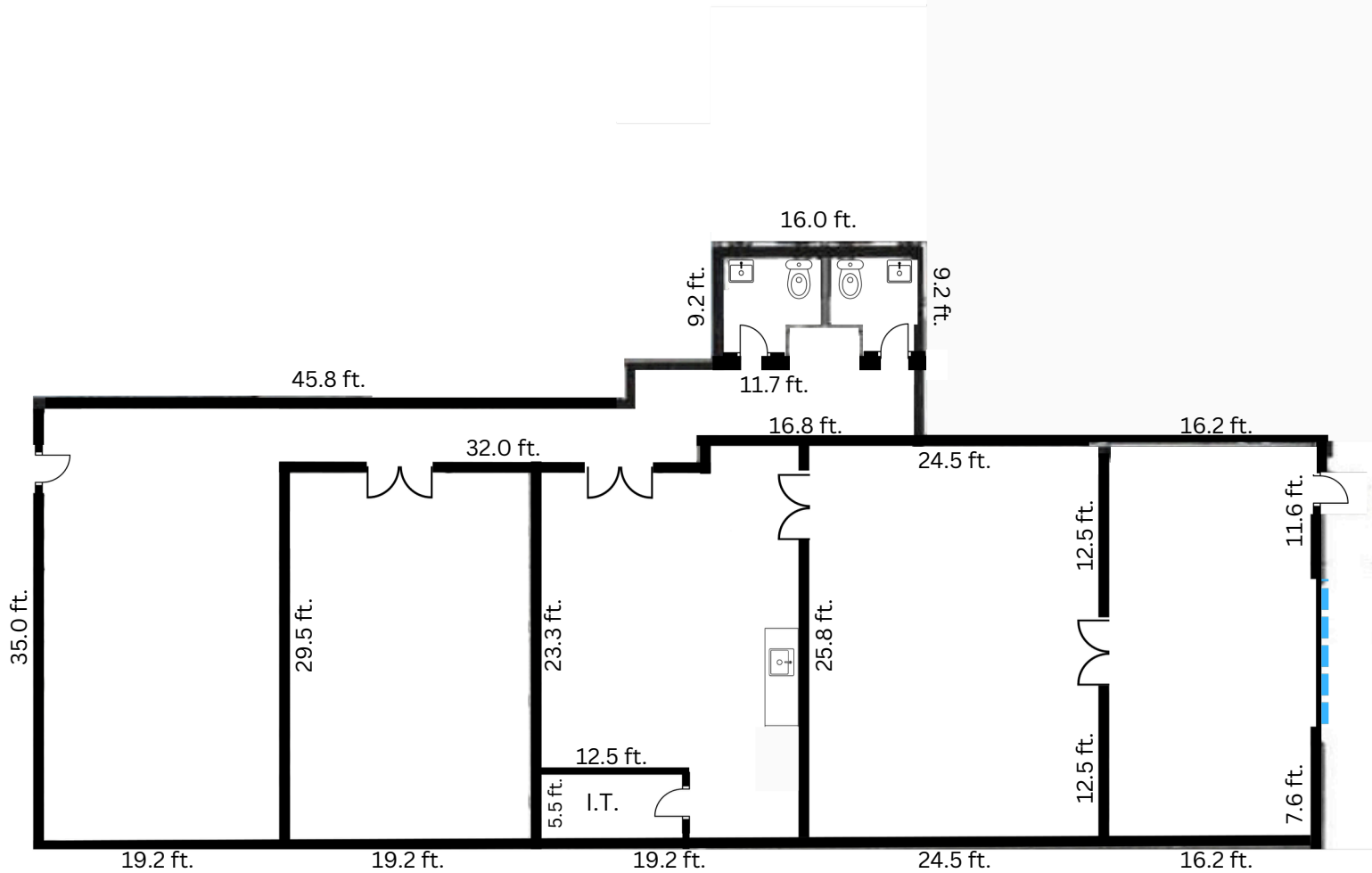


Jurupa Business Park

4100 E. Jurupa St. Ontario CA, 91761

Suite 104 | (3,957 SF)



Floor to Ceiling (Office): 10 ft. (h)

Floor to Ceiling (Lab/Storage): 12 ft. (h)

Floor to Ceiling (Warehouse): 22 ft. (h)

Double-Doors: 6 ft. (w) 8 ft. (h)

Roll-Up Door: 12 ft. (w) 12 ft. (h)